

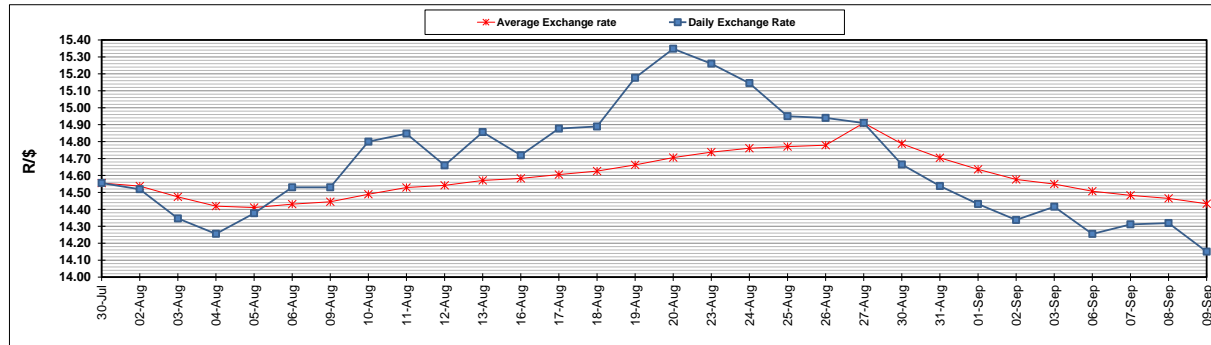
	PETROL 95 ULP	PETROL 93 ULP & LRP	DIESEL 0.05%	DIESEL 0.005%	ILL. PAR.
GAUTENG PUMP PRICE (SA c/l) AS FROM 01/09/2021	1,834.000	1,815.000	-	-	-
WHOLESALE PRICE (SA c/l) AS FROM 01/09/2021	-	-	1,548.980	1,552.380	948.488
SINGLE NATIONAL MAXIMUM RETAIL PRICE	-	-	-	-	1,197.000
BASIC FUEL PRICE - 09/09/2021 (SA c/l)	794.253	782.356	726.751	729.633	720.283
PRESS RELEASE CONTRIBUTION TO BFP 01/09/2021 - 09/09/2021 (SA c/l)	817.110	808.110	746.630	750.030	735.128
UNIT OVER/(UNDER) RECOVERY - 09/09/2021 (SA c/l)	22.857	25.754	19.879	20.397	14.845
AVERAGE BASIC FUEL PRICE 27/08/2021 - 09/09/2021	798.770	786.542	739.118	742.153	733.166
AVERAGE UNIT OVER/(UNDER) RECOVERY 27/08/2021 - 09/09/2021	21.484	24.712	14.712	14.777	6.462

ANALYSIS MOVEMENT OF AVERAGE OVER/(UNDER) RECOVERY

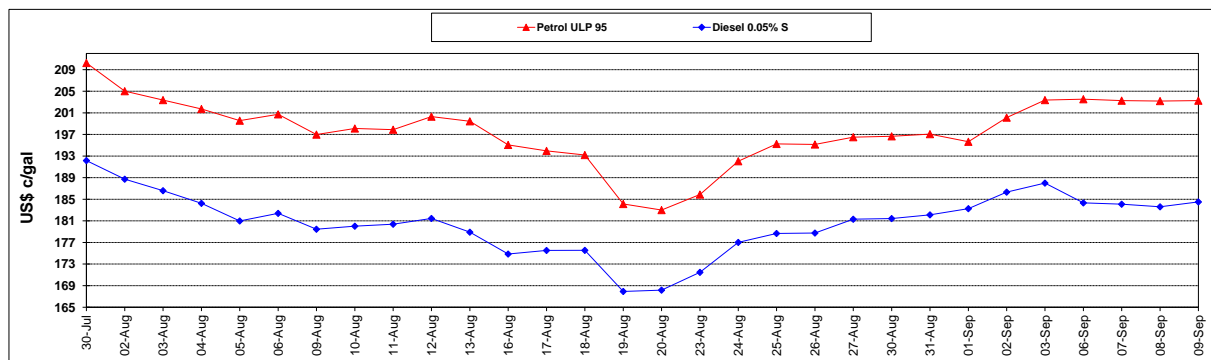
	PETROL 95	PETROL 93	DIESEL 0.05%	DIESEL 0.005%	ILL. PAR.
- MOVEMENT IN INTERNATIONAL PRODUCT PRICES	2.347	5.868	(2.996)	(3.004)	(11.104)
- MOVEMENT IN EXCHANGE RATE	19.137	18.844	17.708	17.781	17.566
AVERAGE UNIT OVER/(UNDER) RECOVERY 27/08/2021 - 09/09/2021	21.484	24.712	14.712	14.777	6.462

R/\$ EXCHANGE RATE - (R/\$14.1500 - 09/09/2021)

EXCHANGE RATE USED IN BASIC FUEL PRICE



INTERNATIONAL PRODUCT PRICES OF BASKET USED IN BASIC FUEL PRICE



BASIC FUEL PRICE IN SA CENTS PER LITRE

